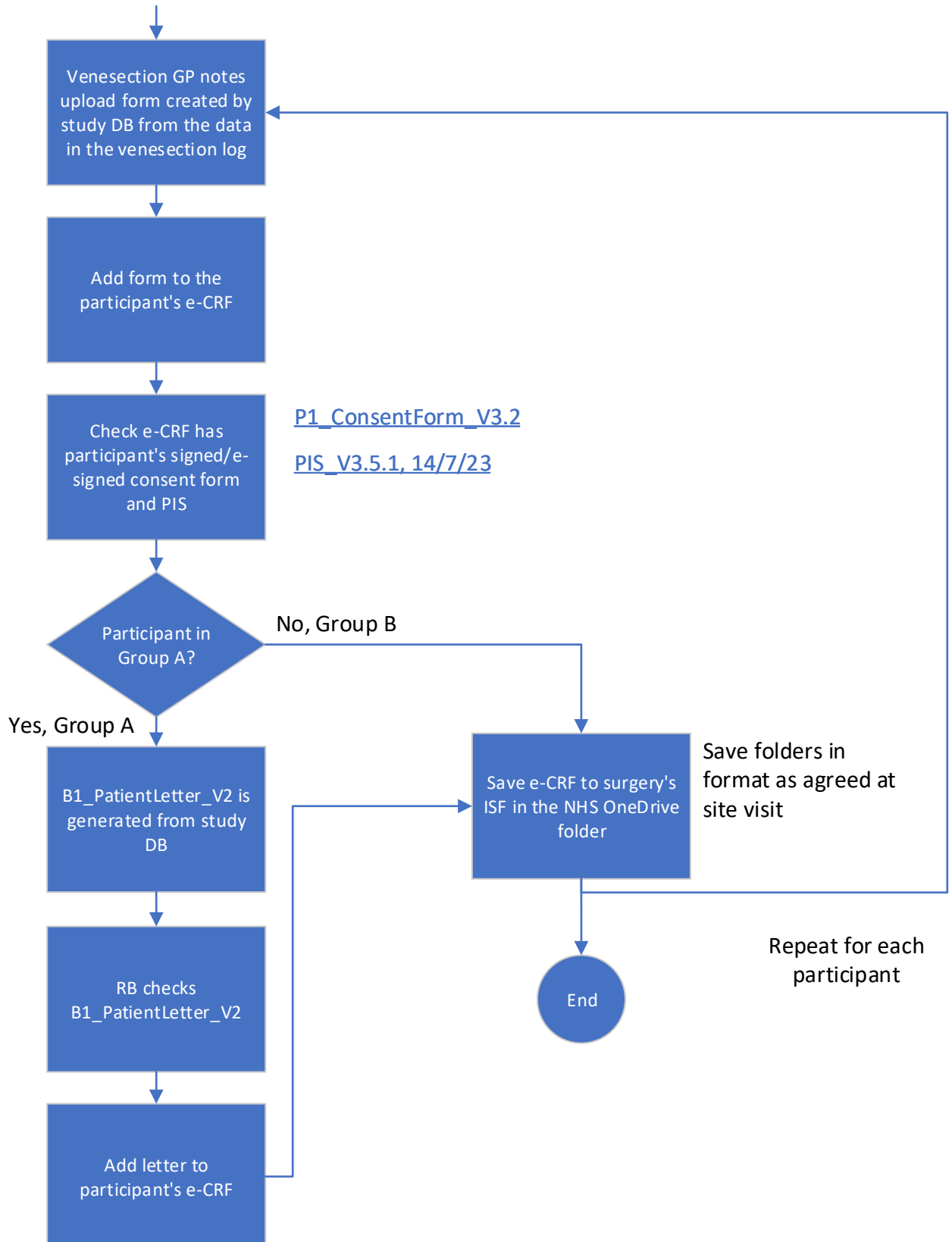


The REFLEX Study - Updating Patient GP Notes Standard Operating Procedure

This flow occurs when data is entered into the REFLEX study database from the venesection log form REFLEX_Venesection_LogSheet_V.1.2 (click to see form)

Venesection_GPnotesUpload_PatientDetails_V1

This data file is automatically created when the venesection log sheet data is entered into the study database
(Click for sample)



Approved by C.B.