

The REFLEX Study - Phlebotomist Standard Operating Procedure

Use venesection supplies that are available at the surgery.
Surgeries are being reimbursed £12 per participant as ETCs.

All surgeries have different procedures, enquire at reception for details.

Hand patient list to
receptionist

Repeat the following for each participant

Check participant
identity
(Name and DOB)

Confirm sight of
participant's REFLEX
consent form

Order of draw:
gold x 2
purple x 2
gold x 3
purple x 1

Perform venepuncture:
3 purple top
5 gold top

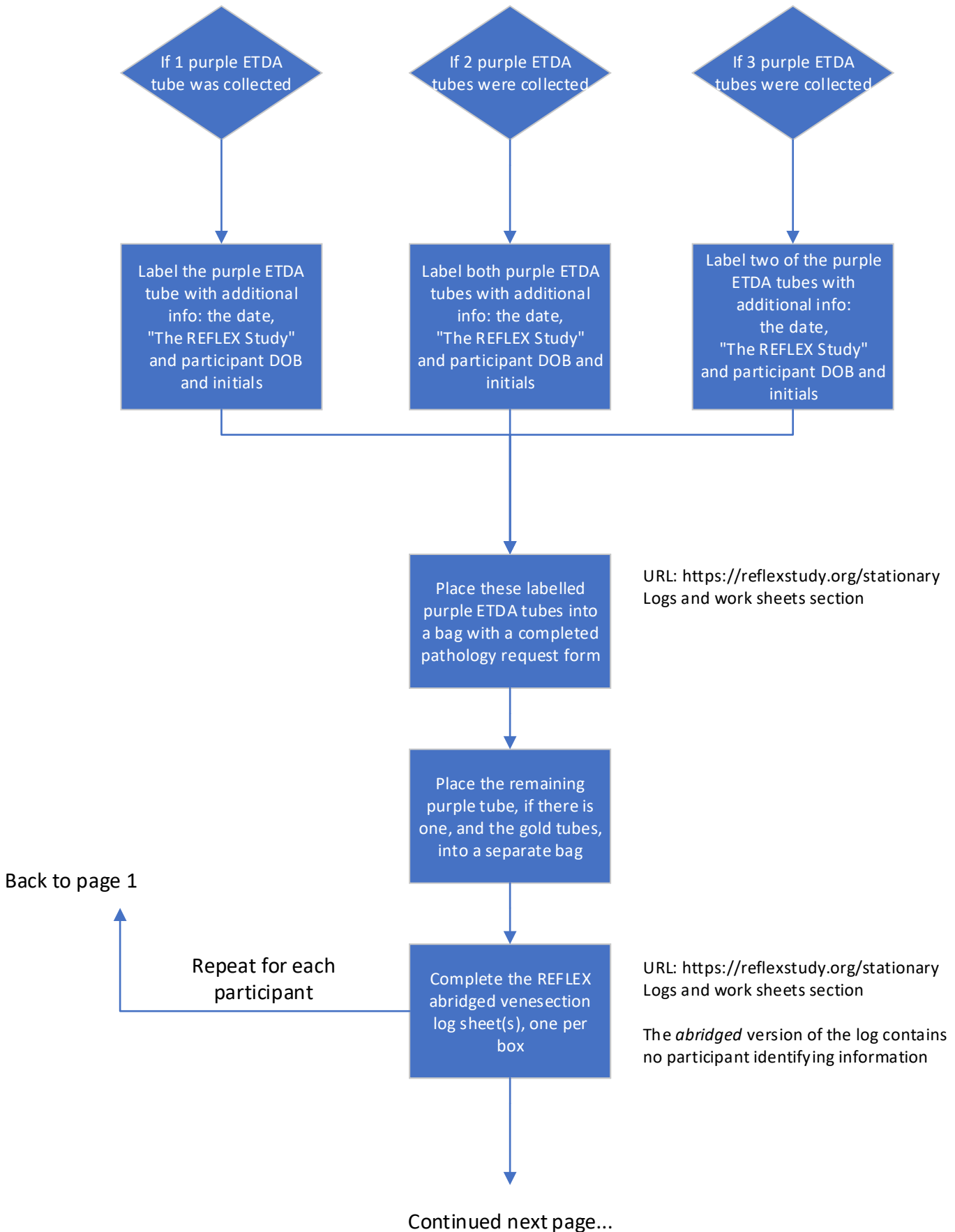
The study chief
investigator can
link participant
IDs to names

Label all tubes with
participant ID

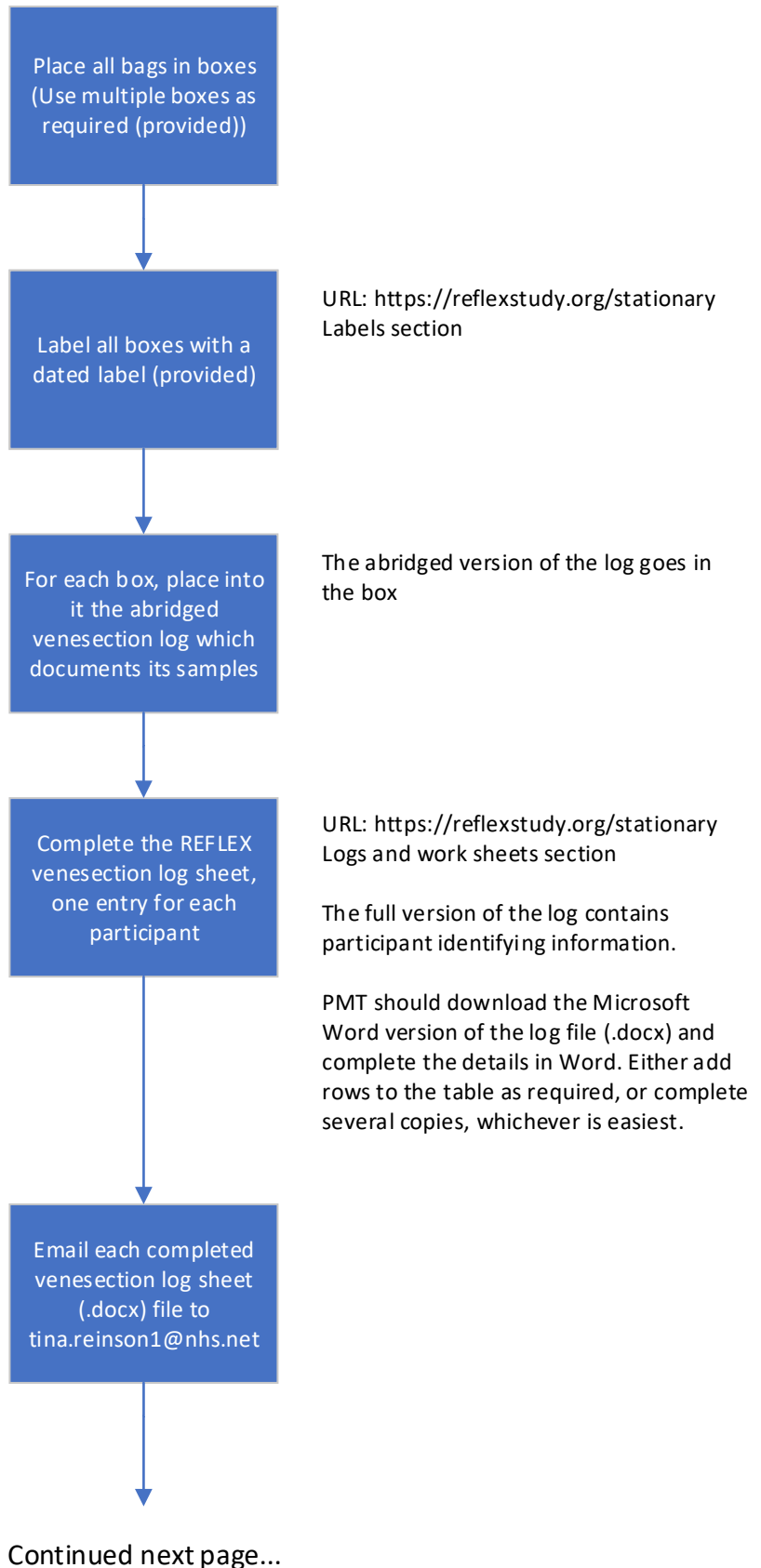
Continued next page...

From page 2

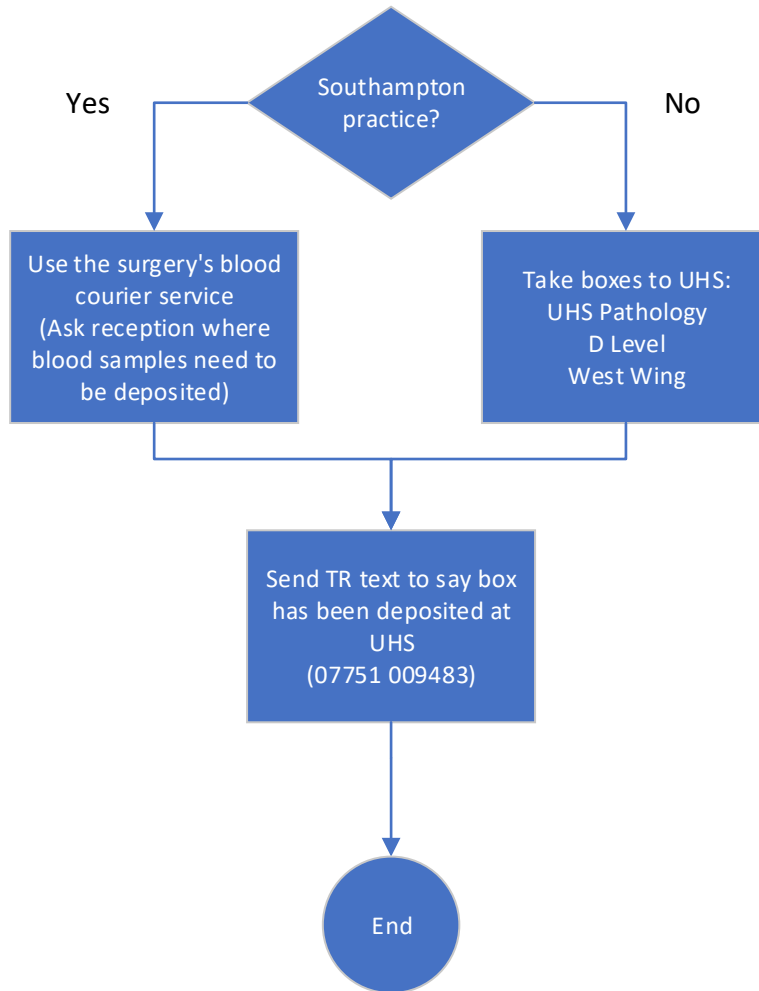
Separate out the purple ETDA tubes



When all participants are complete, box and log the bags



Deliver boxes to UHS



Approved by C.B.